

QUICK START GUIDE



Automatic calf feeder 2.2 Dosing device powder

This document provides a quick overview of how to set up a powder additive doser and the corresponding additive plans.

1 Clean dosing device manually

2 Unplug calf feeder

3 Lay and connect control cable *

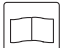
4 Remove cover plate from fly screen
If available


5 Attach retaining bolts *

6 Hang in the dosing device

7 Connect the control cable with dosing device
and plug the calf feeder in again

8 Register the dosing device

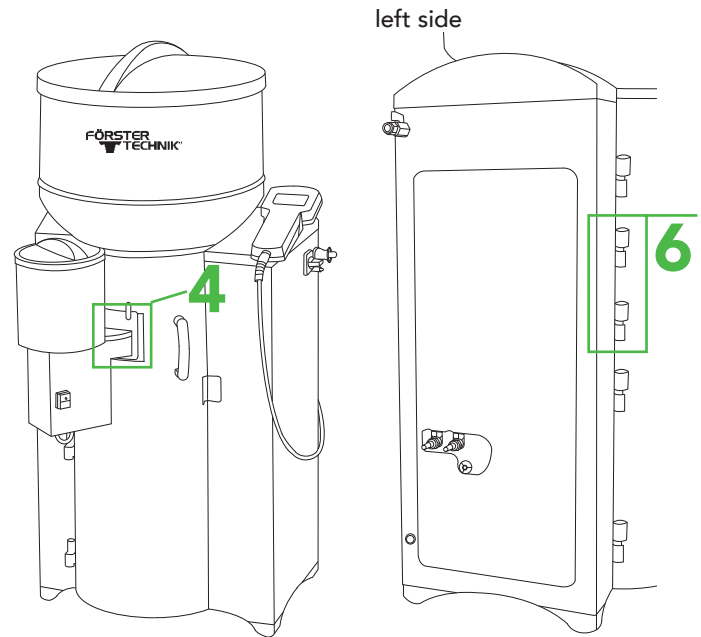
Turn off feeder → keep  pressed → turn on the feeder and hold button until the Setup menu is displayed.

→  Equipment

→

...	
▶ Additive dispenser 1	[yes]
Additive dispenser 2	[yes]
....	

* only for retrofitting

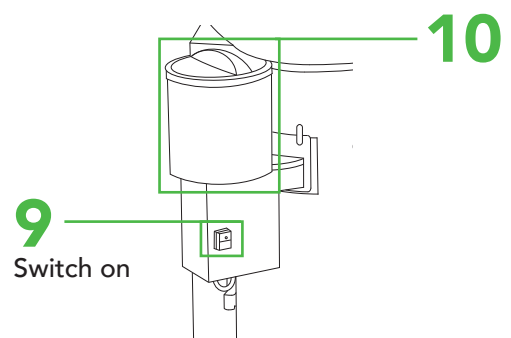


9 Activate vapor screen
If available

10 Filling the dosing device

- Add an additive to the container
- Dispense a small amount of additive, to fill the dosing unit

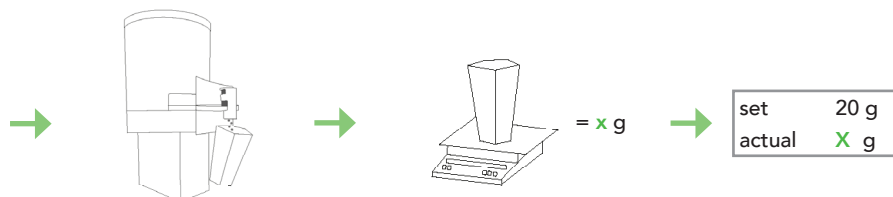
 ▶ Diagnosis → ▶ motors → ▶ Additive 1 → Enter



11 Calibration

During initial start-up calibrate at least 3 times

 ▶ Calibration → ▶ components → additive → start?



Attention! Output in several small quantities.

Weigh the dispensed quantity on a separate scale.

X = Adjust the current value according to your measurement.

This checklist refers to the basic equipment of the calf feeder. Not all available functions of the automatic feeder or the extensions can be shown. For detailed information and valid warnings as well as safety instructions, please refer to the instructions manual. (Status 21/07)

QUICK START GUIDE

Automatic calf feeder - 2.2 dosing device powder

12 Create plans



a) Medicine (Additive in feed)

→ **Medicine prescr.** →

< Prescription 1 - 4 >

Days from to

P 1: 5 2.0 2.0

P 2: 0 0.0 0.0

Duration 5

Dosage []

Distribution []

Dispenser []

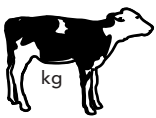
Duration and additive quantity

< Prescription 1 - 4 >

	Days	from	till	
P 1:	5	2.0	2.0	Final value in g
P 2:	0	0.0	0.0	Start value in g
Duration	5			Length of period

→ Dosage []

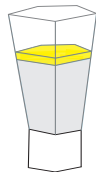
[g/100kg]
According to the animal's weight



[g/day]
As daily quantity per animal

		1	2	3	4	5
6	7	8	9	10	11	12
13	14	15	16	17	18	19
20	21	22	23	24	25	26
27	28	29	30	31		

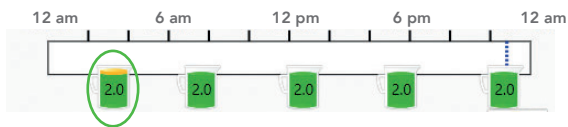
[g/l]
According to the feed quantity



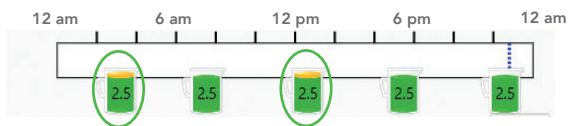
▲ Additive +
1 liter feed

→ Distribution []

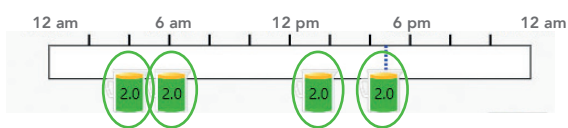
[once] a day



[twice] a day



[equal] distributed



→ Dispenser []

Chose the corresponding dispenser.

b) Electrolyte (Additive in water)

→ **Electrolyte prescr.** →

Quantity [] g/l

Duration [] days

Electrolyte [] l

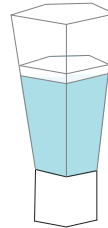
Feed [] l

Waiting time 02:00

Dispenser []

→ Quantity [] g/l

→ Duration [] Days

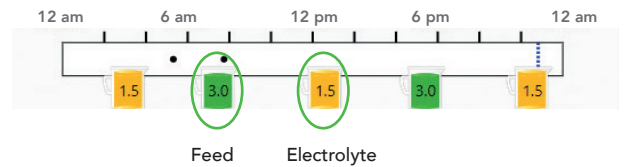


▲ Electrolyte +
1 liter water

		1	2	3	4	5
6	7	8	9	10	11	12
13	14	15	16	17	18	19
20	21	22	23	24	25	26
27	28	29	30	31		

→ Electrolyte [] l Quantity of electrolyte / meal

→ Feed [] l Quantity of feed / meal



→ Waiting time 02:00

Time between feed and electrolyte, which the calf must wait until it can consume feed/electrolyte again.

→ Dispenser []

Chose the corresponding dispenser.

13 Allocate the prescription plans



a) → Animal

→ **Additive** → Enter

dispensed → P1 / P2 / P3 / P4 / EL

b) → Group

→ **Additive 1** → Enter

dispensed → P1 / P2 / P3 / P4 / EL

c) Blocking the residual portion

→ **Animal** or **Group**

→ **blocked** → Enter → Yes